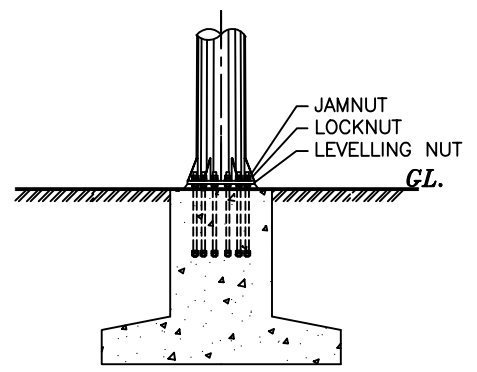
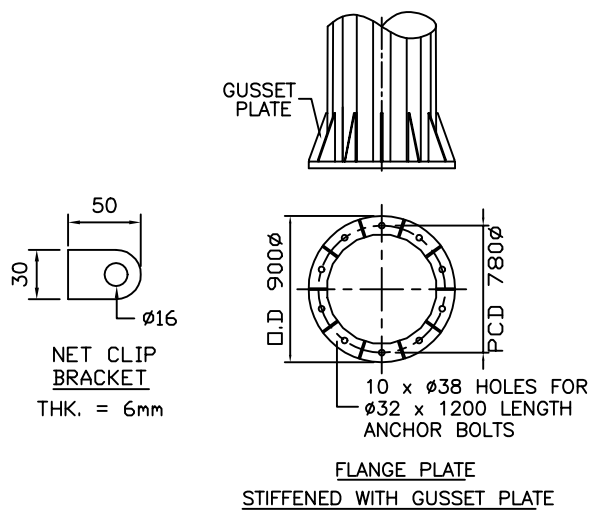
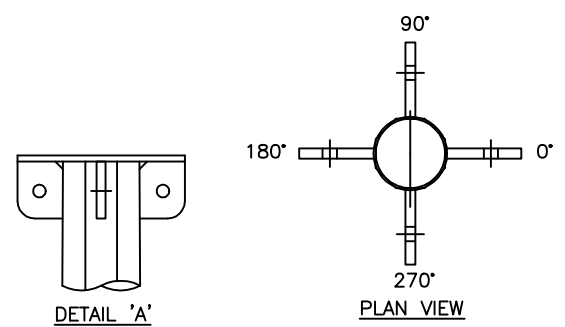


**TECHNICAL INFORMATION**

COLUMN DESIGN	:	ILE TR7./ BS-CP3
MATERIAL	:	BS 4360 G50A / JIS G3101 SS400
BASIC WIND SPEED	:	35 m/s
TOPOGRAPHY FACTOR	:	1
TERRAIN CATERGORY	:	2
EXPOSURE PERIOD	:	25 YEARS
WELDING CONFORMS TO	:	BS 5135
GALVANIZING CONFORMS TO	:	BS 729



**GALVANISED POLES AUSTRALIA**  
 45 Briggs Street, Welshpool,  
 Western Australia 6106  
 P: 1300 790 343  
 E: sales@galvanisedpolesaustralia.com  
 www.galvanisedpolesaustralia.com

CLIENT : -	PROJECT : -	DATE : 15-09-2010	DRAWN BY : D.C.	DRAWING TITLE : <b>25M NETTING POLE FM</b>
------------	-------------	-------------------	-----------------	--------------------------------------------

DRAW NO : 30M/NP/FM/01/R0	FILE NAME : NP ISO STD	INCHARGE BY : D.C.	SCALE : N.T.S
CHECK/APPR. BY : D.C.	A4 SIZE	THIS DRAWING IS THE PROPERTY OF GALVANISED POLES AUSTRALIA AND MUST NOT BE REPRODUCED WITHOUT THEIR PRIOR CONSENT IN WRITING.	