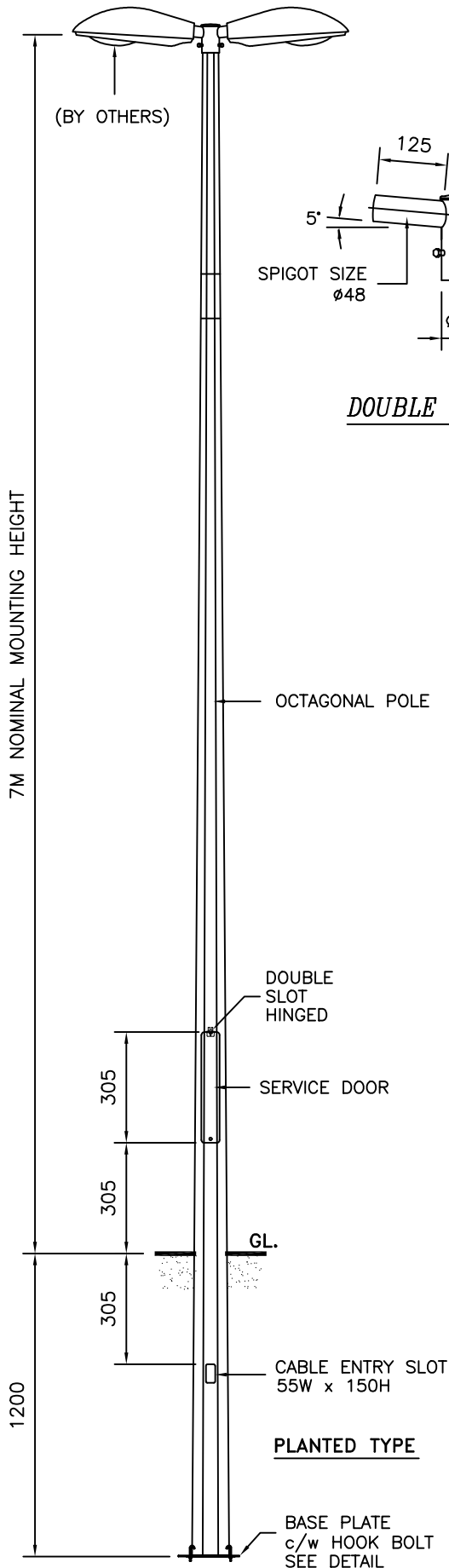
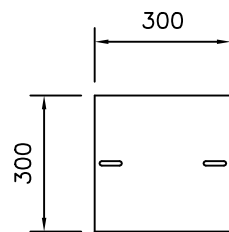
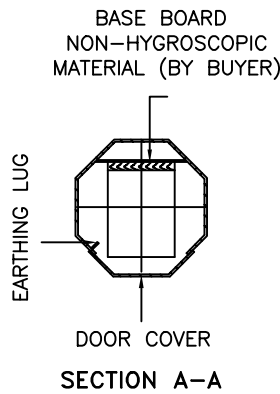


TECHNICAL SPECIFICATIONS

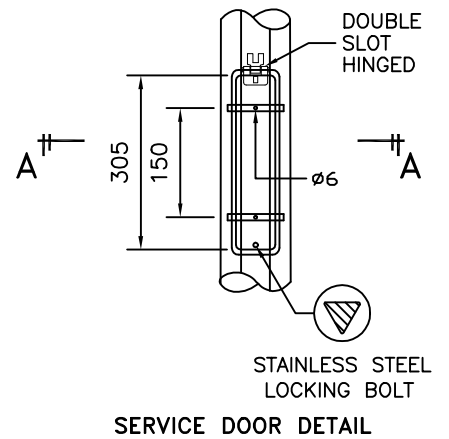
- GPA COLUMNS, POLES AND MASTS ARE SPECIFICALLY DESIGNED AND ENGINEERED FOR THE VARIOUS AUSTRALIAN WIND SPEED, TERRAIN AND TOPOGRAPHIC CONDITIONS.
- GPA COLUMNS, POLES AND MASTS ARE MANUFACTURED IN COMPLIANCE TO AUSTRALIAN STANDARD AS/NZS 1170
- MATERIALS USED FOR LIGHTING COLUMNS ARE IN COMPLIANCE TO AS/NZS 4600.
- LIGHTING COLUMNS ARE LONGITUDINALLY SEAM WELDED CONFORM TO AUSTRALIAN STANDARDS BY AUTOMATIC CONTINUOUS METAL INERT GAS (MIG) PROCESS.
- COLUMNS ARE ANTI-CORRODED BY HOT-DIP GALVANISED, COMPLIANCE TO GALVANIZING STANDARD AS4680
- SERVICE DOOR DIMENSIONS ARE GIVEN AS A GUIDE ONLY. THE ENGINEER MUST SATISFY HIMSELF THAT DIMENSIONS GIVEN ARE ADEQUATE FOR THE INSTALLATION OF THE REQUIRED CONTROL GEAR.
- ALL DIMENSIONS ARE IN (mm), UNLESS OTHERWISE SPECIFIED.



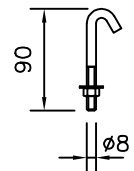
DOUBLE SHORT ARM



BASE PLATE



SERVICE DOOR DETAIL



HOOK BOLT



**GALVANISED POLES
AUSTRALIA**

45 Briggs Street, Welshpool,
Western Australia 6106
P: 1300 790 343
E: sales@galvanisedpolesaustralia.com
www.galvanisedpolesaustralia.com

CLIENT : -

PROJECT : -

DATE : 17-03-2010

DRAWN BY : D.C.

DRAWING TITLE :

**7M STREET LIGHTING COLUMN
DOUBLE SHORT ARM PT**

DRAW NO : 7M/SLC/DSA/PT/R0

FILE NAME : SLC STD ISO

CHECKED BY : D.C.

SCALE : N.T.S

APPROVED BY : D.C.

A4 SIZE

THIS DRAWING IS THE PROPERTY OF GALVANISED POLES AUSTRALIA
AND MUST NOT BE REPRODUCED WITHOUT THEIR PRIOR CONSENT IN
WRITING.